

Hardware Disease

1

● What is Hardware Disease?

Wires, and other metallic objects can get into a cow's stomach and often go on to cause problems. When wires sit in the reticulum (second stomach) they are only inches from the liver, spleen, heart and lungs.

The wires become trapped in the honeycomb lining of the reticulum, where the digestive motions of the stomach acts to puncture, and then push them through. The wires then move the few inches towards the vital organs.

● A new problem?

A leading large animal vet has recognised Hardware Disease as a more serious issue than had been recently thought. Vet Peter Orpin, from Park Vets, reported in the *Vet Record* that in one herd, "an unusually high number of cows >10% were exiting due to non-specific illness and death." Further investigations revealed the cows may have been exposed to high levels of wires from a bonfire site on the unit and from deteriorating tyres on the silage clamps.

Another UK farm practice reports that over 10% of all cows examined post mortem had wires present in the reticulum. Many of these cows had been culled due to poor performance and non-specific illnesses.

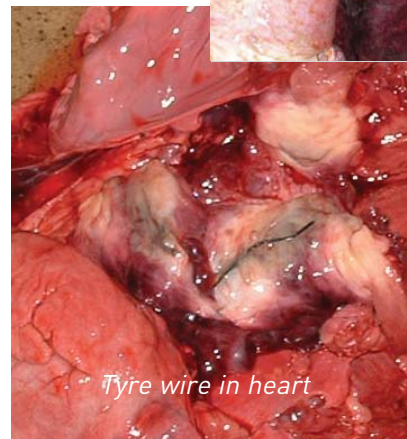
● Clinical signs

Classic signs of "a wire" are a grunting cow with reduced milk production and a raised temperature. Nowadays, in many instances this is not the case: Peter Orpin states.

"The clinical signs of affected cows were extremely variable." Common signs of Hardware Disease now include milk drop, reduced or stopped rumen turnover, firm dung and mild resentment to a "withers pinch."



Nail puncturing diaphragm



Tyre wire in heart

Cows often show nothing more than weight loss and increased salivation.

"The "bar test", elevation of temperature and audible grunting were inconsistent findings. Determining an accurate diagnosis, farmer had attempted treatment," Mr Orpin notes, was nearly impossible.

Hardware Disease

PREVENTION

Prevent access to potential hardware:

1. Removal of all sources of wires on the farm would be the first logical step. This includes car tyres on the silage clamp.
2. Dispose of all rubbish and wire carefully.
3. Avoid burning rubbish on site or where cows can access the ash.
4. Store feedstuffs in secure sites away from potential contaminants.
5. Straights should be checked for presence of wire or other contaminants.
6. Use reticular magnets (Cow Magnets) to help collect and remove potential problem wires in the stomach.

Cow Magnets help reduce disease

Cow magnets are a recognised way to help prevent the impact on Hardware Disease on a dairy herd. Cows fed on TMR, and even while grazing, can be exposed to wire and other metallic objects more often than you may realise. The modern dairy cow will eat anything presented in feedstuffs – including nails, staples and tyre wire fragments.

The Cow Magnet is designed to sit permanently within the reticulum of the cow. Here the magnet can help collect any stray metal particles by attracting and holding them to the surface.

Traditionally the magnet design has precluded use in younger animals: the size of the magnet meant it could only be given easily as a bolus to animals over 350kg. Cow Magnets offer four easy to use versions of the reticular magnet that can be used safely from 150kg and upwards.



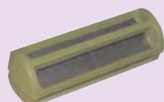
For more information speak to your vet

Magnets available from



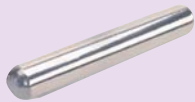
www.cowmagnets.co.uk

BoviMAX™



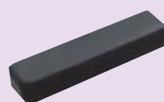
Cage system super strong ABS protective cage

SilverSTAR™



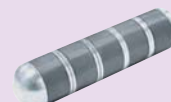
Stainless steel polished to a smooth chrome like finish

Super BlackMAX II™



Black coated extra strong multi-pole ferrite

FerriMAX™



Ringed ferrite assembly for maximum strength



Registered address
Dawes Farm, Bognor Road, Warnham,
West Sussex RH12 3SH Tel:01306 628086

Practice Stamp