

The complete range:

# RUMENATE™

# IMMUNATE™

# ELEVATE™

RUMENATE, IMMUNATE and ELEVATE are a range of natural, easy to use feeding solutions, giving access to Alltech's suite of technologies on your farm.

Alltech has over thirty years experience in improving animal health and performance through nutrition. These proven solutions help combat the common challenges that can compromise performance in your herd.

## IMMUNATE™

Focusing the power of nutrition on the immune status of the cow and calf

IMMUNATE™ is designed to:

- Enhance the immune response to support health status during risk periods such as transition and calving
- Increase colostrum quality – essential for healthy calves

## ELEVATE™

Maximising animal longevity and performance

ELEVATE™ is designed to :

- Increase trace mineral status to help improve immune response and promote increased reproductive performance
- Stabilise the rumen environment by reducing rumen pH variation
- Improve hoof quality and help decrease the incidence of lameness
- Support udder health and promote improved immune response

Distributed by:



Alltech European Bioscience Centre  
Sarney, Summerhill Road  
Dunboyne, Co. Meath, Ireland  
Tel: 00 353 (0) 1 825 2244  
Fax: 00 353 (0) 1 825 2245

Alltech.com  
f AlltechNaturally t @Alltech

Copyright ©, 2015, Alltech. All rights reserved. (GR4471)



**Alltech®**  
**FEED EFFICIENCY**

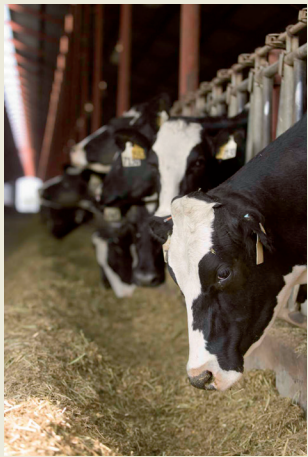
**RUMENATE™**

# RUMENATE™

## Promoting rumen function and feed efficiency

The rumen ecosystem undergoes constant change and adaptation. Changes in management or nutrition significantly impact rumen microbial activity and the microbes ability to digest feed.

RUMENATE™ has been designed to promote a favourable environment for maximum microbial activity in the rumen. This enhances diet digestibility and nutrient utilisation in the digestive tract, which helps to maximise animal performance.



## RUMENATE is designed to:

1. Promote rumen efficiency and diet utilisation.
2. Maximise dry matter intake – closing the 'energy gap' during early lactation and restoring energy balance post-calving.
3. Help decrease the incidence of sub-optimal health and performance as a result of mycotoxin feed contamination.

## How does RUMENATE work?

RUMENATE optimises rumen health by 'feeding the gut' – specifically the beneficial bacteria in the rumen. Our combination of proven technologies has been carefully selected to work synergistically in order to promote fibrolytic bacteria in the rumen, aiding overall ration utilisation.

## What results can I expect to see?

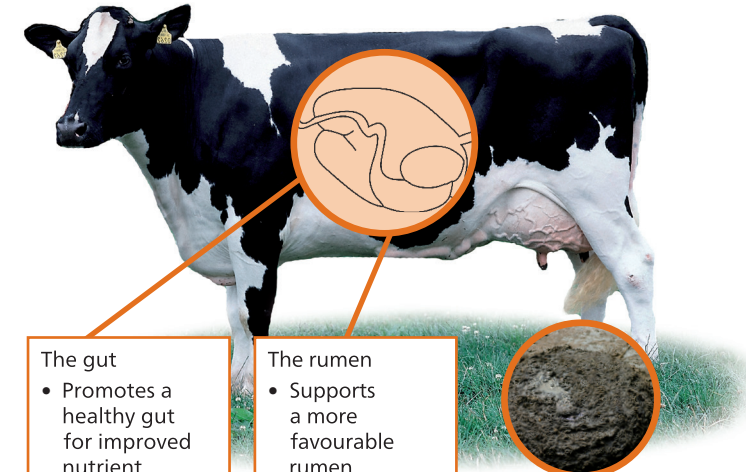
Trials have demonstrated:

- ✓ Increased milk yield and milk components
- ✓ Increased dry matter intake and feed efficiency
- ✓ Improved liveweight gain
- ✓ Better digested feed and manure consistency

For best results, feed RUMENATE at the rates below:

	g/cow/day
Lactating dairy cows	50
Dry cows	50
Heifers and young stock	25
Beef cattle	35

*Or as advised by your nutritionist or vet*



**The gut**

- Promotes a healthy gut for improved nutrient absorption

**The rumen**

- Supports a more favourable rumen environment for better feed efficiency
- Helps maximise rumen fermentation for improved digestion

**Manure**

- Reduces the amount of undigested feed in the manure

The issue	The risk factor	The solution
Digestibility problems / changes in the diet	The transition period, the opening/closing of a new silo and high starch diets during early lactation challenge rumen pH and stability leading to digestive upsets.	RUMENATE helps to counteract the negative effects of diet changes and dry matter intake variability by promoting rumen function, stabilising rumen pH and helping to improve diet digestibility.
Low dry matter intake and weight loss	Post-partum cows are prone to losing body condition due to negative energy balance and low dry matter intake.	RUMENATE supports dry matter intake and diet digestibility, providing more nutrients for maintenance, enhancing body condition score and supporting milk production.
Mould and mycotoxin challenges	Mycotoxins can have a direct impact on the rumen microbial population, compromising rumen function and decreasing feed digestibility.	RUMENATE contributes to the control and management of the impact of mycotoxins on the animal.



Alltech's core competence is fermentation technology, which we have developed over the past 30 years. We work with the largest farms and feed manufacturers in the world and provide them with nutritional technologies that not only improve their bottom line, but benefit the animal and help to safeguard our planet's natural resources.